

A photograph of a modern patio area. Large glass doors and windows provide a view into a contemporary interior with a white sofa and a dining area. Outside, there is a white sofa, a wooden coffee table, and a view of a cityscape. The patio is covered with a glass roof supported by metal cables. An orange decorative bar is positioned above the main title.

## A STYLISH WAY OUT ONTO YOUR PATIO

### MB-59HS

ALUPROF's **MB-59HS** offers extensive potential for the construction of lift and slide doors and, at the same time, it is an optimised solution in terms of the leaf and frame profile structure.

The system comes in two thermal insulation variants, the ST and the HI. The selection of available profiles include twin and triple-track frames, and leaves that are adapted to two heights of rolling devices. A wide range of single- or double-glazing units can be installed, as can acoustic or burglar-resistant glass. The properties of the **MB-59HS** make it ideal for use in buildings ranging from the individual to hotels and apartments.

## FUNCTIONS AND AESTHETICS

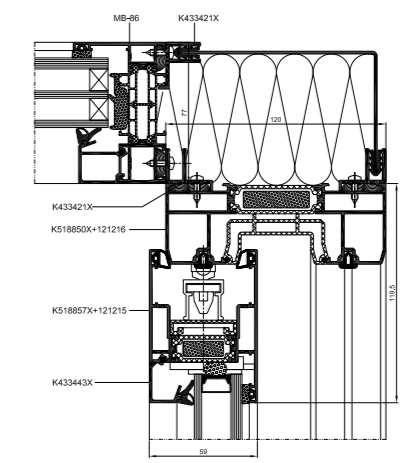


- 01 the slender, durable profiles feature a triple structure where the central section is an insulation chamber with wide thermal breaks
- 02 twin- and triple-track frames make it possible to produce doors with a wide opening
- 03 glazing thicknesses up to 42 mm can be used for the door leaves, providing plenty of choice in terms of suitable glass parameters
- 04 the extensive permissible leaf dimensions considerably exceed the standard values, with a height of up to 2.8 m, a width of up to 3.3 m and a maximum leaf weight of 300 kg
- 05 the high air- and watertightness parameters are achieved thanks to the customised shape of the seals and the hardware, which enable the leaf to settle into the frame during the final stage of closing the door
- 06 the relatively low,  $U_f$  heat transfer coefficient of the frames is ensured by wide thermal separators, polyethylene inserts and plastic profile sections installed in thermal insulation strips
- 07 fixed lights can be created with glass set directly into the frame, providing an aesthetic and economic solution
- 08 the system can be fitted with most of the lift and slide hardware available on the market
- 09 a version with a low threshold is available, providing an easy-to-use option, particularly for elderly or disabled people
- 10 the doors can be installed not only in individual buildings, but also in larger structures forming mullion and transom façades or conservatories
- 11 the construction technology for the system has been simplified to the maximum in order to reduce production time and costs
- 12 the system is compatible with other ALUPROF solutions and some of the mullion and transom or
- 13 conservatory parts can be used interchangeably

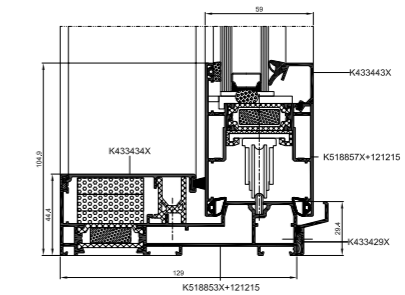


## PERFORMANCE

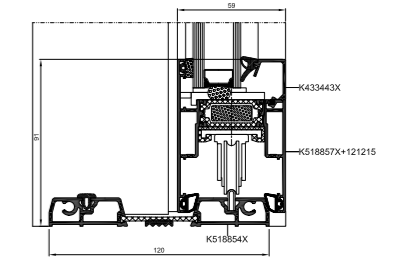
Air permeability	class 3, EN 12207
Watertightness	up to class 9A (600 Pa), EN 12208
Wind load resistance	up to class C3, EN 12210
Thermal insulation	$U_f$ from 1.8 W/(m <sup>2</sup> K)



cross section through the 90° angle joint of the MB-59HS door with fixed window



cross section of the bottom of the door with a fixed window



cross section of the bottom of a door with a low threshold

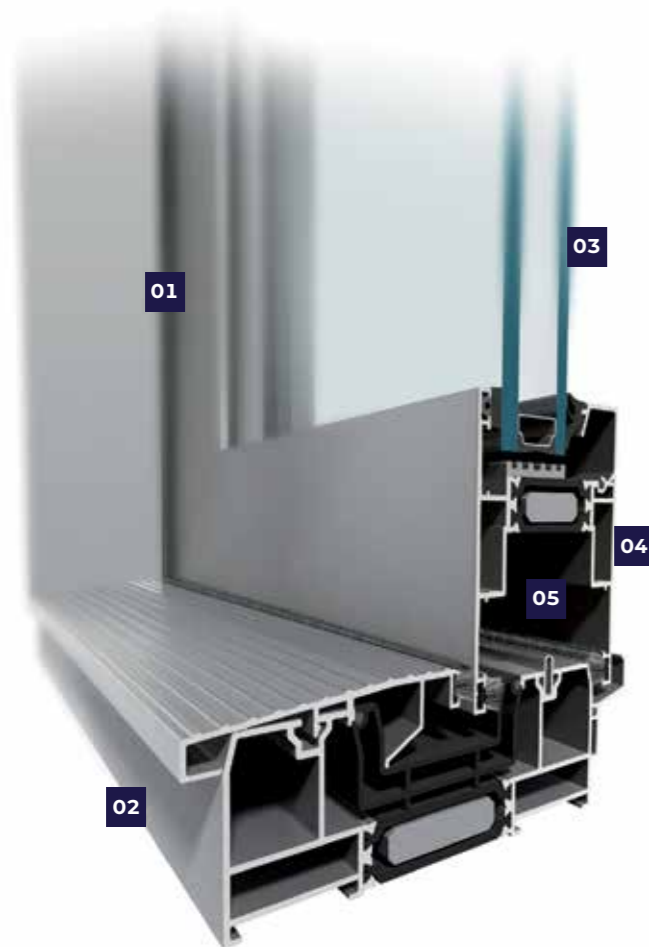
# LIVING CLOSER TO NATURE



## MB-59 SLIDE

The **MB-59 Slide** is intended for the production of thermally insulated sliding doors which can be installed in masonry walls, aluminium façades, conservatories and shop windows and other similar expanses of glass. Sliding doors, particularly extensive ones, visually 'enlarge' a living area by linking it to a patio or garden. In terms of thermal insulation, the **MB-59 Slide** profiles have two different variants: the ST and the HI. The range of available profiles include twin- and triple-track frames. A wide selection of single- or double-glazing units can be installed, as can acoustic or burglar-resistant glass. The properties of the **MB-59 Slide** make it ideal for use in buildings ranging from the individual to hotels and apartments.

## FUNCTIONS AND AESTHETICS

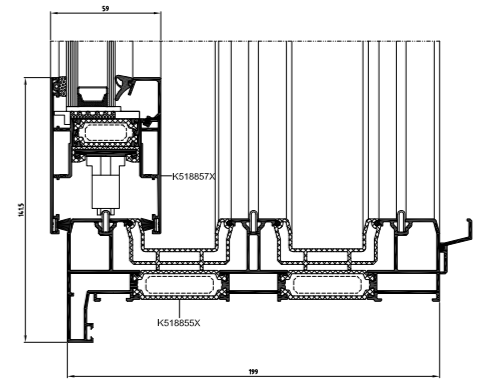
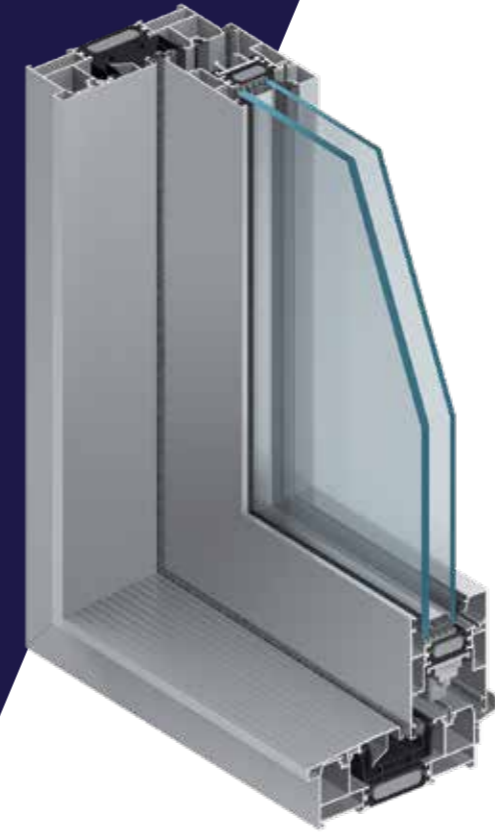


- 01 the slender, durable profiles feature a triple structure where the central section is an insulation chamber with wide thermal breaks
- 02 twin- and triple-track frames make it possible to produce doors with a wide opening
- 03 glazing thicknesses up to 42 mm can be used for the door leaves, providing plenty of choice in terms of suitable glass parameters
- 04 the door features extensive permissible leaf dimensions, with a height of up to 2.6 m, a width of up to 1.8 m and a maximum leaf weight of 160 kg
- 05 the system can be fitted with most of the lift and slide hardware available on the market
- 06 the doors can be installed not only in individual buildings, but also in larger structures forming mullion and transom façades or conservatories
- 07 the construction technology for the system has been simplified to the maximum in order to reduce production time and costs
- 08 the system is compatible with other ALUPROF solutions and some of the parts can be used interchangeably

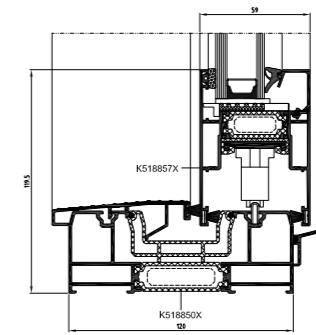
## PERFORMANCE

Air permeability	class 3, EN 12207
Watertightness	class 6A, EN 12208
Wind load resistance	class C3, EN 12210
Thermal insulation	$U_f$ from 1.9 W/(m <sup>2</sup> K)

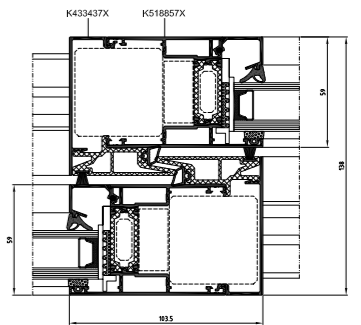




cross section of the bottom of the door with a triple-track renovation frame



cross section of the bottom of the door



cross section of a door leaf

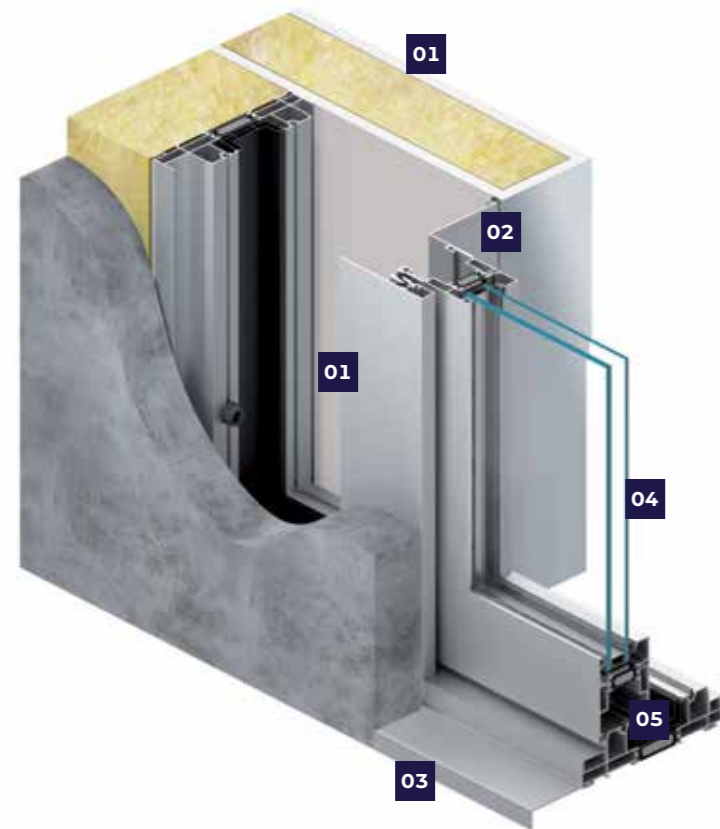


## BOUNDLESS CONTACT WITH YOUR SURROUNDINGS

### MB-59 SLIDE GALANDAGE

The ALUPROF **MB-59 Slide Galandage**, which is based on our MB-59 SLIDE system, is designed for creating thermally insulated sliding doors which tuck away into the walls as they are opened. This leaves them completely hidden from view and eliminates the boundary between a living area and the outdoor world of a patio or garden. **MB-59 Slide Galandage** system profiles come in two options that offer different thermal insulation performances: the ST and the HI. The range of available profiles include twin- and triple-track frames. A wide range of single- or double-glazing units can be installed, as can acoustic or burglar-resistant glass.

## FUNCTIONS AND AESTHETICS



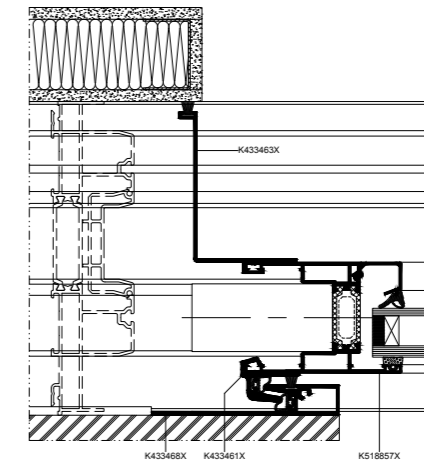
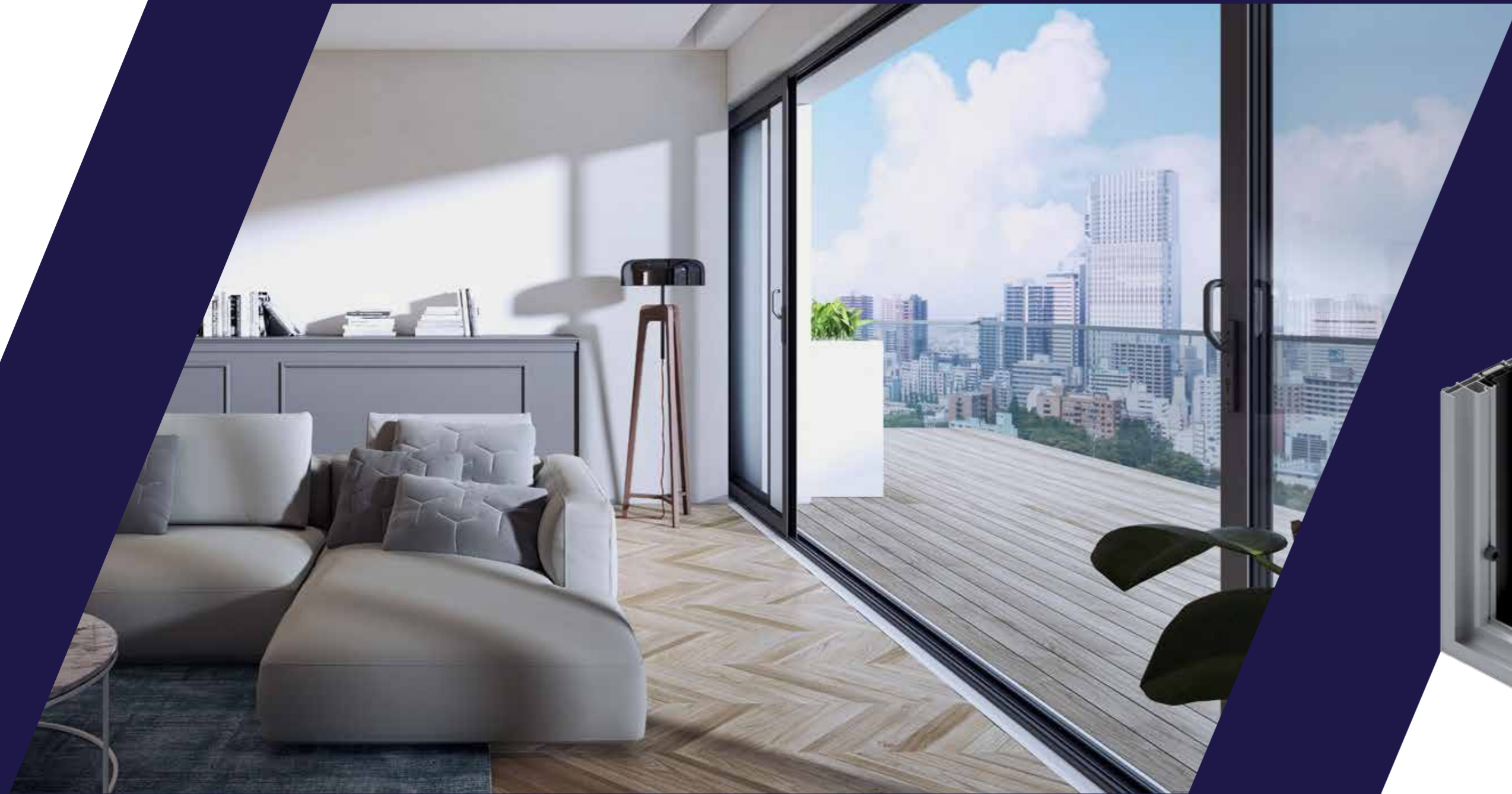
- 01 the door tucks away into the wall completely, leaving unhampered access to the open spaces of a patio or garden
- 02 the slender, durable profiles feature a triple structure where the central section is an insulation chamber with wide thermal breaks
- 03 twin- and triple-track frames make it possible to produce doors with a wide opening
- 04 glazing thicknesses up to 42 mm can be used for the door leaves, providing plenty of choice in terms of suitable glass parameters
- 05 the system can be fitted with most of the lift and slide hardware available on the market
- 06 the door features extensive permissible leaf dimensions, with a height of up to 2.6 m, a width of up to 1.8 m and a maximum leaf weight of 160 kg

## PERFORMANCE

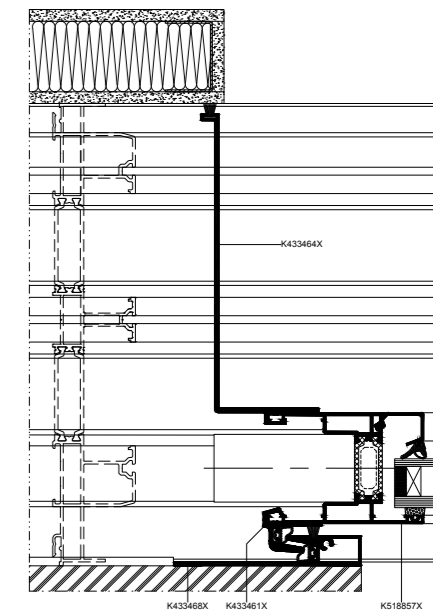
Air permeability	class 3, EN 12207
Watertightness	class 5A, EN 12208
Wind load resistance	class C2/B2, EN 12210
Thermal insulation	$U_f$ from 1.9 W/(m <sup>2</sup> K)







side cross section of a door with a twin-track frame built into a wall



side cross section of a door with a triple-track frame built into a wall