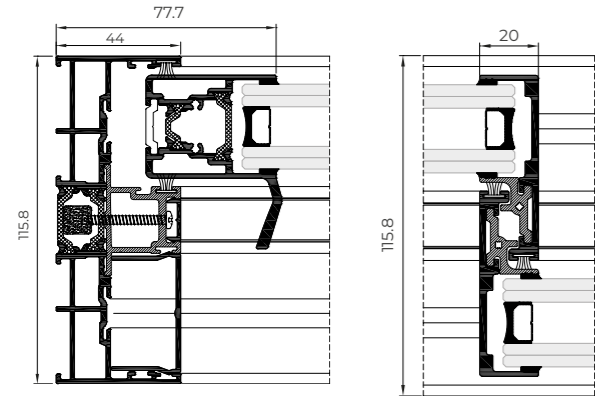


COR VISION

Thermally broken minimalist sliding system that provides maximum luminosity with a minimal aluminium interlock profile. It has an elegant design only 20 mm sightline and offers the possibility of an inlaid closing system and of hiding the frame along the perimeter.
 Possibility of locking system in the interlock, thus allowing the concealment of the sashes in the frame from a frontal view.
 Possibility of embedded locking system which facilitates the sashes crossing.



Sightlines

Frame 116 mm / 182 mm 3 rails
 Sash 37 mm

Polyamide Strip Length

16 / 24 mm

Profile Thickness

Door 1.7 mm

Glazing

Max. 30 mm, Min. 26 mm

Maximum Sash Dimensions

Width (L) 2500 mm, Height (H) 3000 mm

Maximum Sash Weight

320 Kg

Consult maximum weight and dimensions according to typologies

FEATURES

Transmittance		$U_w \geq 1.3 (W/m^2K)$
Acoustic insulation		Rw up to 41 dB
Air permeability		Class 4
Water tightness		Class 7A
Wind resistance		Class C5

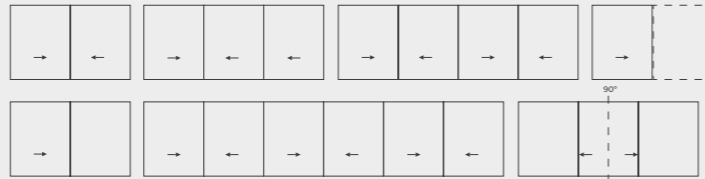
Reference test 1.23 x 1.55 m / 1 sash + 1 fixed light

POSSIBILITIES



ACCESSIBILITY

OPENING POSSIBILITIES



Sliding
 Possibility of 1, 2 or 3 rails
 Possibility of interior and exterior corner at 90° without mullion
 Pocket possibility

Sliding

Thermally broken



COR VISION

